



广东馥融传动科技有限公司  
Guangdong Haitec Transmission and Technology Co.,Ltd

Web: [www.kineticltd.com.hk](http://www.kineticltd.com.hk)

Tel: 00-852-25055818

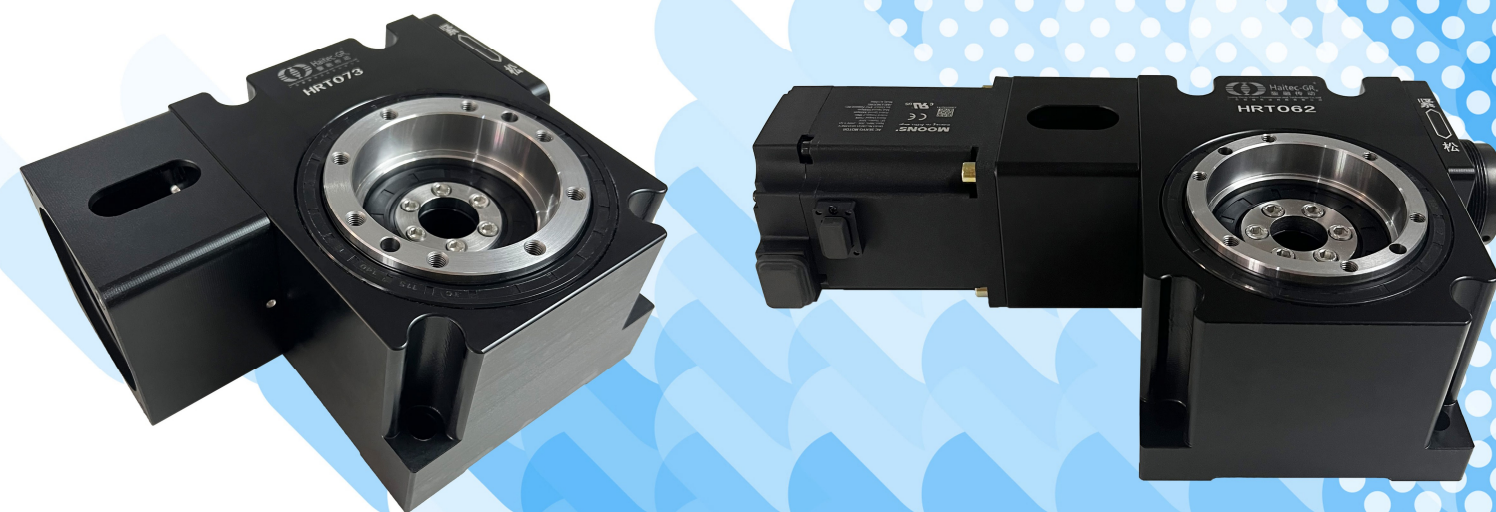
Attn: Winnie Tsang

E-mail: [sales@kineticltd.com.hk](mailto:sales@kineticltd.com.hk)

Add: 香港柴灣豐業街12號,啟力工業中心A座1609室  
Unit A9, 16/F, Kailey Industrial Centre,  
12 Fung Yip Street, Chai Wan, Hong Kong



扫码关注微信公众号  
WeChat Public



## 全新经济实用数控转盘

Haitec Digital Rotary Table

[多工位] [高精度] [可调背隙]

[Multi-station] [High precision] [Adjustable backlash]

广东馥融传动科技有限公司

Guangdong Haitec Transmission and Technology Co.,Ltd

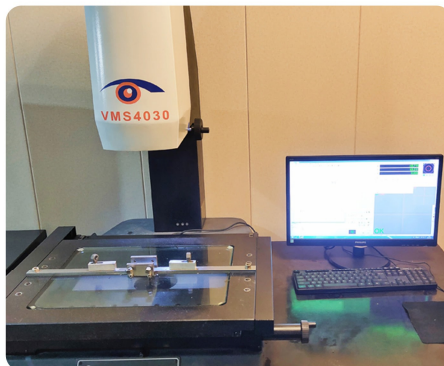


广东馥融传动科技有限公司其前身为广东欧特士传动设备有限公司，2002年12月通过ISO9001质量管理体系认证，是国内最早引进国外(意大利)先进机械技术的企业之一。二十多年来凭借雄厚的技术实力，优质成熟的产品，完善的服务体系，使公司得到了迅猛的发展。公司著名的Haitec-GR商标系列机械产品遍布全国各地及欧美等海外市场，其产品的技术指标和实际应用效果得到了用户的充分肯定和一致好评。

Guangdong Haitec Transmission and Technology Co., Ltd., formerly Guangzhou Haitec Transmission Equipment Co., Ltd., passed the ISO9001 Quality Management System certification in December 2002, is the first Chinese enterprise which introducing full Italy advanced technology and advanced mechanical infra-structure production. Over the past 20 years with strong technical strength, high-quality mature products, perfect service system, so that the company has been in rapid development. The famous Haitec-GR brand mechanical products are distributed to many global countries and overseas markets such as Europe and the United States.



传动不息，创新不止  
continuous  
transmission,  
more innovation



# 全新经济实用数控转盘

HAITEC DIGITAL ROTARY TABLE



## 产品性能

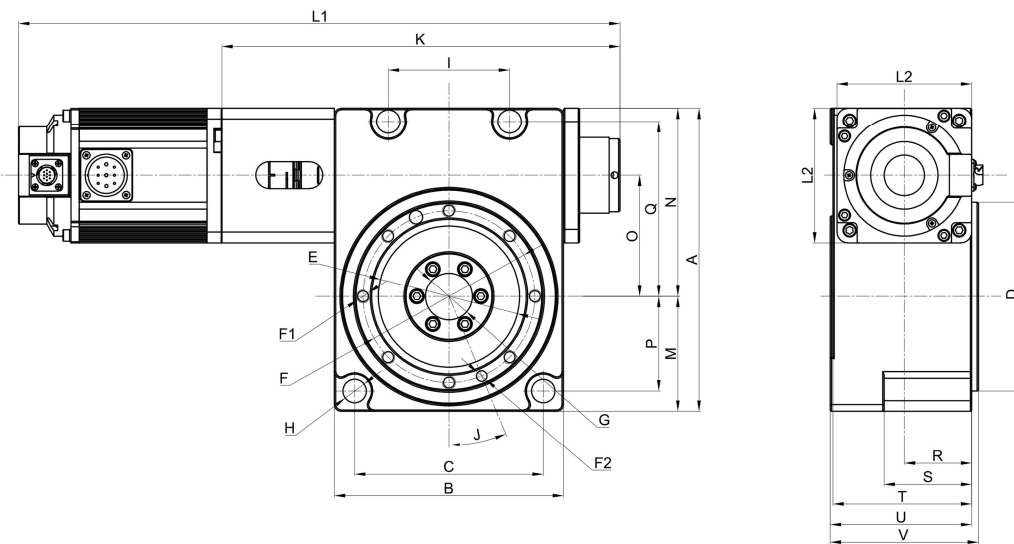
## Product performance

- **低噪音：**设计优化静谧作业  
Low noise: Design optimized for quiet operation
- **高负载：**可承受高负载(带工件)工作  
High load: Can withstand high loads (with workpieces)
- **高精度：**重复定位精度高达 $\pm 15(\text{arc-sec})$   
High accuracy: Repeat positioning accuracy up to  $\pm 15(\text{arc-sec})$
- **寿命长：**使用高硬度、高密度材料精度寿命佳  
Long life: Use of high hardness, high density material precision life is good
- **更改工位：**可按应用需求随时更改工位数量  
Change of workstations: The number of workstations can be changed at any time according to the application requirements
- **可调背隙：**背隙因磨损变大后可调回原始精度  
Adjustable backlash: The backlash can be adjusted back to its original accuracy when it becomes large due to wear and tear
- **中空结构：**集成高效传动承载稳定、安装简单高效  
Hollow structure: Integrated high-efficiency transmission stable load bearing, simple and efficient installation
- **强度可靠：**经测试整体性能稳定可满足不同工况需求  
Reliable strength: The overall performance has been tested and stabilized to meet the needs of different working conditions

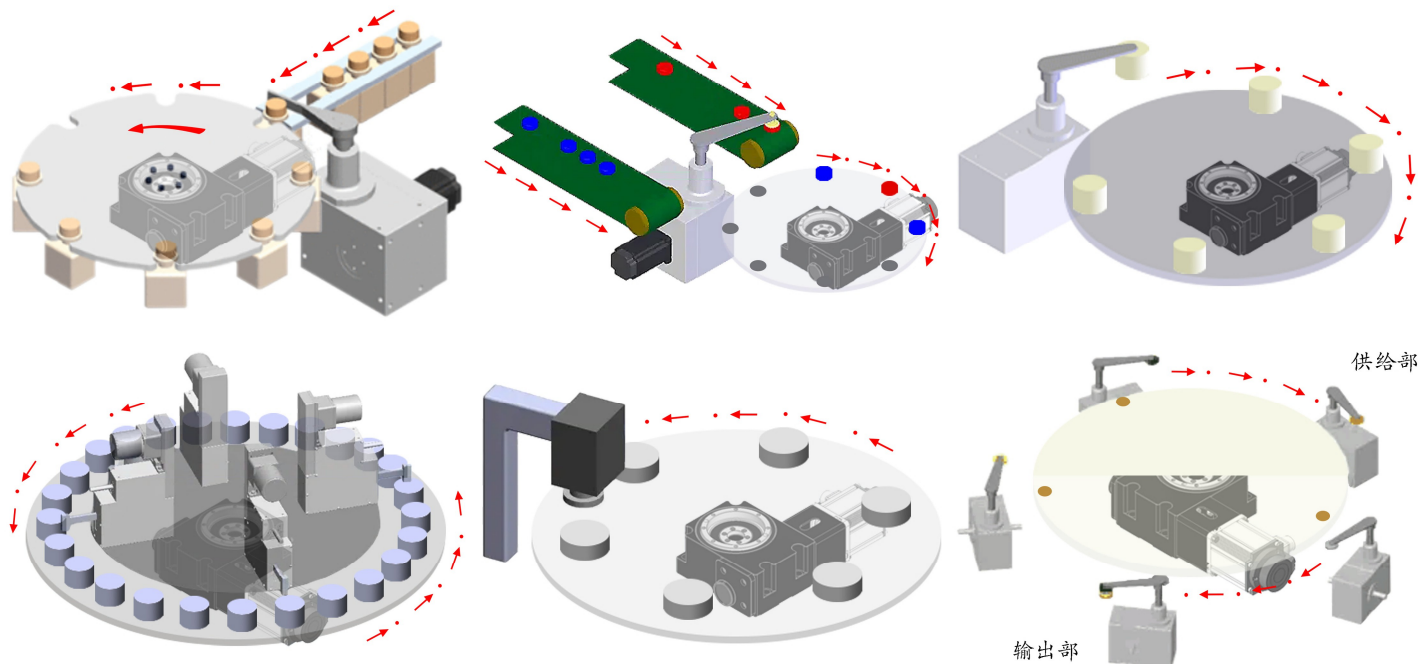


数控转盘适用于回转式圆盘驱动场合，广泛使用在各类盘式加工机械及类似机构的产业机械，自动化间歇驱动部件，驱动圆盘。HRT is suitable for rotary disk drive applications, widely used in various types of disk-type processing machinery and similar mechanisms of industrial machinery, automation intermittent drive components, drive disk.





HRT	A	B	C	D	E	F	F1	F2	G	H	I	J	K	L1	L2	M	N	O	P	Q	R	S	T	U	V
049	135	110	86	φ 65	φ 47	φ 56	6-M6×12	2-φ 6	φ 15	φ 9	50	22.5°	190	278	60	55	80	50	43	72.5	30	35	62	65	70
062	166	125	102	φ 90	φ 70	φ 80	6-M6×12	2-φ 6	φ 22	φ 11	70	22.5°	222.5	335	80	63	103	63	49	93	40	65	82	85	90
073	200	155	120	φ 115	φ 90	φ 102.5	8-M8×12	2-φ 8	φ 28	φ 13.5	90	22.5°	259	387	80	75	125	75	60	115	50	65	82	85	90
089	225	170	140	φ 140	φ 115	φ 127.5	8-M10×12	2-φ 10	φ 35	φ 17.5	90	22.5°	295.5	446.5	100	85	140	90	70	130	50	65	102	105	110
125	305	250	224	φ 190	φ 160	φ 175	8-M10×12	2-φ 10	φ 60	φ 17.5	224	22.5°	363.5	548.5	100	125	180	130	115	70	50	65	102	105	110



对于特殊要求，我们为您提供个性化的解决方案，我们的专家为各行各业提供技术和市场咨询。  
For special requirements, we offer you individual solutions and our experts provide technical and market consulting for a wide range of industries.

### 食品和包装行业 Food and Packaging Industry

应用上提供了高精度多工位解决方案，以确保生产线的高效、卫生和安全运行。

Highly accurate multi-station solutions are provided for applications to ensure efficient, hygienic and safe operation of production lines.

### 丝印和贴标行业 Screen Printing and Labeling Industry

全新数控转盘产品保证了在高效率运转下的稳定性和精度是高品质的印刷和贴标流程及其他连续工作制应用的完美解决方案。

The new HRT products guarantee stability and precision at high operating efficiencies and are the perfect solution for high quality printing and labeling processes and other continuous duty applications.

### 汽车装配行业 Automobile assembly industry

数控转盘在汽车装配中通过其高精度和稳定性，实现汽车零部件的精准加工和组装，从而提高汽车生产效率和质量。

HRT is used in automotive assembly to realize accurate processing and assembly of automotive parts through its high precision and stability, thus improving automotive production efficiency and quality.

### 水灌装行业 Water Filling industry

主要用于实现圆周方向或直线方向上的间歇输送，确保水灌装的精确性和效率。作为自动化机器的核心传动装置，数控转盘发挥着至关重要的作用。

It is mainly used to realize intermittent conveying in circumferential direction or linear direction to ensure the accuracy and efficiency of water filling. As the core drive of an automated machine, the HRT plays a vital role.

### 检测设备 Inspection Equipment

数控转盘在检测设备中通过其精确的旋转和多工位功能，实现对被测物体的精确位置检测，提高了检测的准确性和效率。

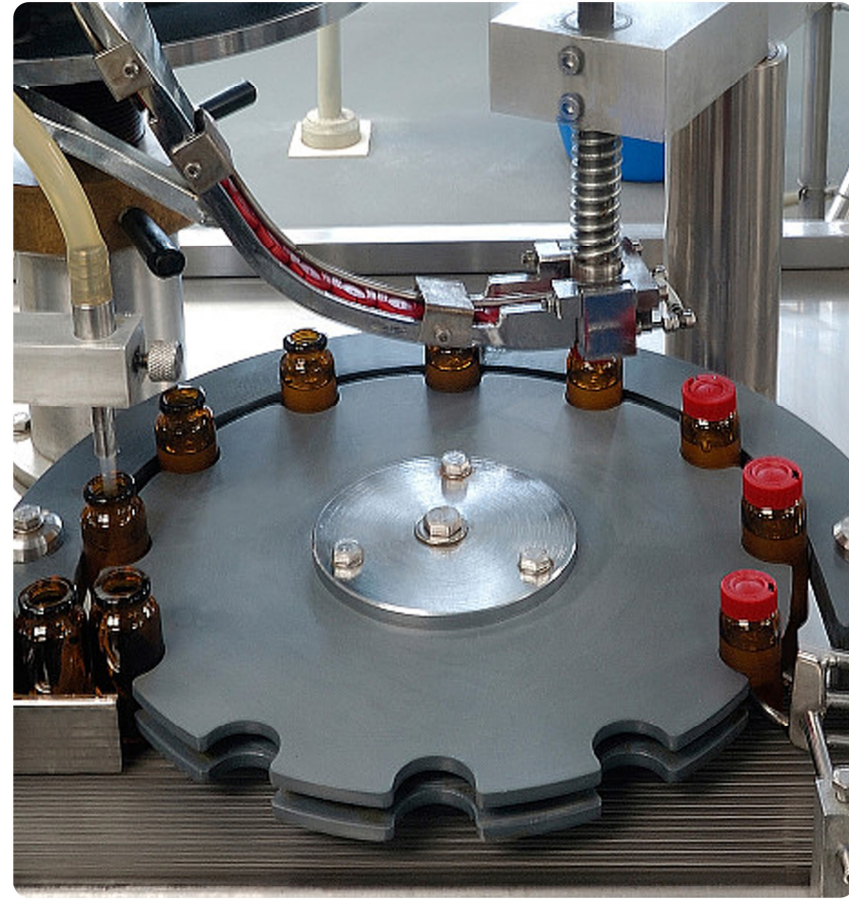
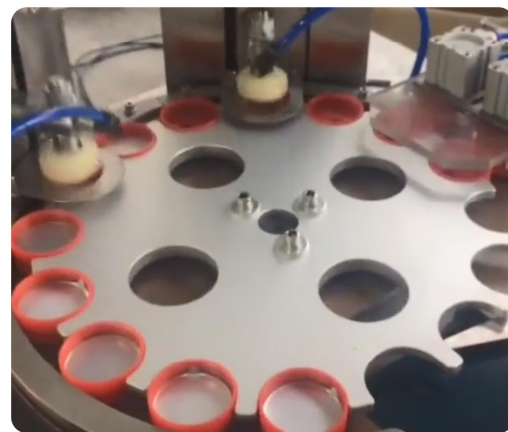
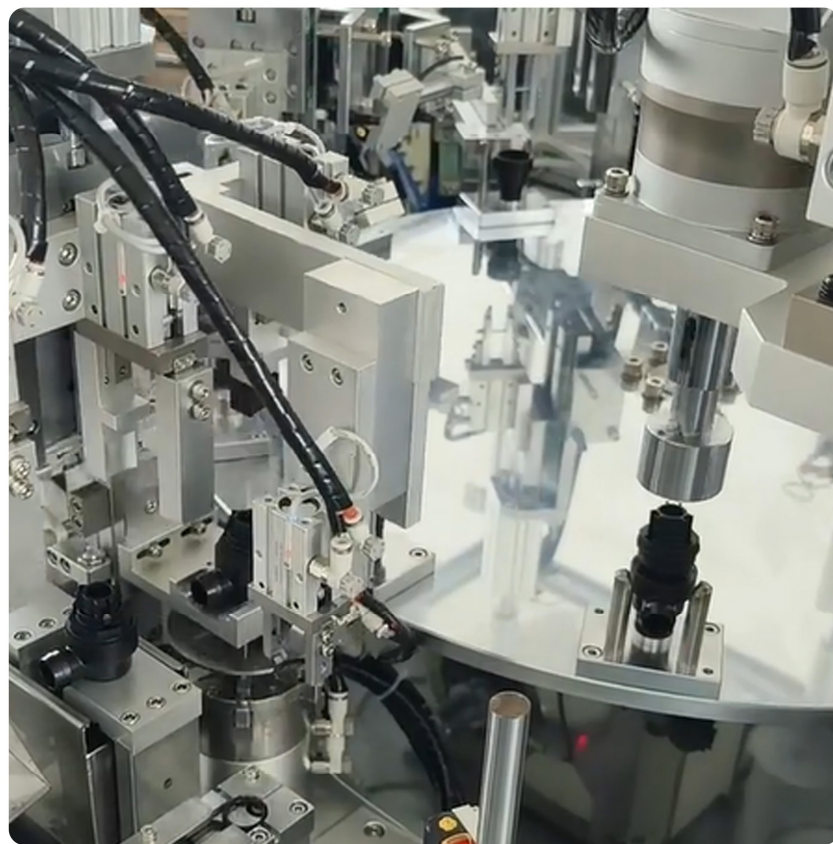
HRT realizes precise positional detection of the object under test in inspection equipment through its precise rotation and multi-position function, which improves the accuracy and efficiency of inspection.

### 医药行业 Pharmaceutical industry

高精度、运行稳定和高效率都源于稳定的、零背隙和高刚度的机械系统解决方案。例如产品在进给、回转及辅助轴上的应用。

High precision, operational stability and efficiency all result from stable, zero backlash and high stiffness mechanical system solutions. Examples include products for feed, rotary and auxiliary axes.





型号 Models	盘面直径 Disk diameter	额定功率 Rating	额定扭矩 Rated torque	最大承载 Maximum load
HRT049	500mm Max	0.4 Kw	38 N·m	30 Kg
HRT062	650mm Max	0.75 Kw	78 N·m	60 Kg
HRT073	750mm Max	1 Kw	112 N·m	100 Kg
HRT089	900mm Max	1.5 Kw	168 N·m	200 Kg
HRT125	1200mm Max	2.5 Kw	300 N·m	400 Kg

### 标准配置 Standard configuration

数控转盘本体 HRT Ontology	1 套	1 set
控制屏幕 Control screen	1 套	1 set
伺服电机和驱动器 Servomotors and drives	1 套	1 set

### 系统构成示意图 Schematic diagram of system composition



\*以上选购配件提供参考，用户可根据设备需求选择搭配购买。  
\* The above optional accessories to provide reference, the user can choose according to the needs of the equipment with the purchase.